

CV 475



FROZEN RUN



Modular ice maker - Vertical evaporator system
Daily production up to 205 kg

• Position n°



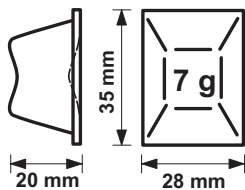
• Application fields

Hotel	●●●●●●●●	Fish market	●●●●●●●●
Restaurant	●●●●●●●●	Supermarket	●●●●●●●●
Fast food	●●●●●●●●	SPA	●●●●●●●●
Bar	●●●●●●●●	Medical	●●●●●●●●
Disco	●●●●●●●●	Industry	●●●●●●●●

• Features & Plus

- Flat cube 7 gr
- Our vertical evaporator provides separated cubes
- External structure AISI 304 Scotch Brite
- Electromechanical functioning
- Air Cooling and Water Cooling systems
- Standard and special voltages
- ON-OFF switch
- Removable air filter for easy cleaning
- Washing system
- Conformity to RoHS directive
- Easy cleaning thanks to rounded surfaces
- Model in Tropical Class + 43 ° C

• Available dice size



• Prod. 24h

Air temp.	Water temp.	Prod. 24h kg
10° C	10° C	205
21° C	15° C	200
32° C	21° C	163

• Usable Bins

- Bin PE530
- Bin T420
- Bin T830
- RB 280

2 Years Warranty

subject to limitations

• Certifications available for this model



www.ntfice.it
info@ntfice.it



ntfice.it



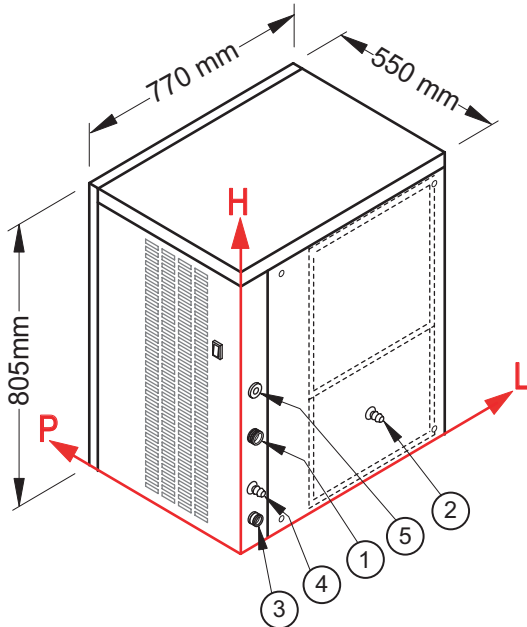
CV 475



FROZEN RUN



Modular ice maker - Vertical evaporator system
Daily production up to 205 kg



• Connections

All measures are referred to the rear bottom-left corner (L-H-Ø)

- ① Water inlet:
38 mm - 252 mm - 3/4"
- ② Condenser water inlet:
375 mm - 115 mm - 12 mm
- ③ Water outlet:
32 mm - 40 mm - 24 mm
- ④ Condenser water outlet:
28 mm - 93 mm - 12 mm
- ⑤ Electrical connections:
33 mm - 323 mm

② ④ Only for water cooling systems

• Working conditions

- Location: Indoor

	Min	Max
Ambient temperature	+10° C	+43° C
Water temperature	+3° C	+32° C
Voltage	-10%	+10%
Water inlet pressure	1bar (14 psi)	6bar (84 psi)

• Technical information

Production in 24h	200 kg
Cooling system	A - W
Kind of cube	7 g
Refrigerant	R404A - R452A
Standard voltage	220-240 V ~ 50 Hz
Electrical consumption	1600 W
Fuse	20 A
Water consumption	A: 2,4 l/kg W: 13 l/kg
Sizes (L-P-H mm)	770 - 550 - 805
Sizes with pack (L-P-H mm)	815 - 615 - 980
Net weight	90 kg
Gross weight	101 kg
Finish	AISI 304 stainless steel, scotch brite

All the technical information must be considered at the following conditions:



Standard Cube (7 g)



Ambient temperature
+21° C



Water temperature
+15° C



Electrical consumption
at +43° C
(standard voltage)

Refrigerant R404A

Models and specifications are subject to change without notice
Rev. 01 - Issued May 2018



www.ntfice.it
info@ntfice.it



ntfice.it

